



"EMPOWERMENT THROUGH TECHNOLOGICAL EXCELLENCE"
GENBA SOPANRAO MOZE COLLEGE OF ENGINEERING

S. No. 25/1/3, Balewadi, Pune - 411045
(Approved by AICTE and Govt. of Maharashtra, Affiliated to Savitribai Phule Pune University)
DTE Code - EN6144 University Affiliation ID - PU/PN/ENGG/138/1999
Ph: 020-29513395 Website: www.gsmozecoe.org Email: gsmoze@yahoo.co.in
Founder President : Shri. Rambhau Moze

Date: 28/8/22

CRITERIA - 7: INSTITUTIONAL VALUES AND BEST PRACTICES

7.1.3 Describe the facilities in the Institution for the management of the following types of Degradable and non-degradable waste (within 200 words)

Pollution from waste is aesthetically unpleasant and results in a large amount of litter. Solid Wastes, which may cause severe health problems, can be categorized into three types, Biodegradable, Non-Biodegradable, Hazard Waste. Biodegradable waste includes food waste, canteen waste and waste from toilets etc. Non-Biodegradable waste includes plastic, tin, glass, bottle etc. and Hazard waste that is likely to be a threat to the health of the environment like, cleaning chemical and different laboratory related Chemical Products. Each and every department of Genba Sopanrao Moze College Of Engineering creates some waste and dumps in small waste-bins located in the department.

1. Solid waste management
2. E-waste management

This is the report on how Genba Sopanrao Moze College Of Engineering focuses on the technical, economic and environmental aspects of the waste management techniques practiced at an educational campus in Genba Sopanrao Moze College Of Engineering, Balewadi. It encompasses the entire spectrum of waste collection, segregation, reuse, recycle, incineration and landfill.

An in-depth analysis of this process has been done as it helps to both emulate and improve this complex yet essential practice.



[Signature]
PRINCIPAL

Genba Sopanrao Moze College of Engg
25/1/3, Balewadi, PUNE-411 045



"EMPOWERMENT THROUGH TECHNOLOGICAL EXCELLENCE"
GENBA SOPANRAO MOZE COLLEGE OF ENGINEERING

5. No. 25/1/3, Balewadi, Pune - 411045

(Approved by AICTE and Govt. of Maharashtra, Affiliated to Savitribai Phule Pune University)

DTE Code - EN6144 University Affiliation ID - PU/PN/ENGG/138/1999

Ph: 020-29513395 Website: www.gsmozece.org Email: gsmoze@yahoo.co.in

Founder President : Shri. Rambhau Moze

Date: 28/8/22

In Genba Sopanrao Moze College Of Engineering we also focus E-waste Collection.

Organizes different drives and programs so that student should gain the importance of e-waste collection.

1. Solid Waste :

An efficient management of waste starts with regular collection of waste generated. This task has been made easier by placement of dustbins at appropriate places. For example, dustbins are placed at canteens, each corridor of all the buildings, roadsides, etc. Covered dustbins are used in order to prevent breeding of infectious vectors.

The frequency of waste collection depends upon the sources. More the amount of waste generated at a particular source, more will be the frequency of waste collection. Management of Non-Biodegradable wastes. The different stages involved in the management of non-biodegradable waste at the RC are segregation, storage, reuse and selling.

The different kinds of wastes brought to the Recycling Centre have to be segregated so that it can be further processed. The initial stage of waste management involves segregation based on material. Wastes collected from residential buildings are already segregated at source and hence are not included in the segregation process.

Bins of different colors are assigned at staff quarters for different wastes as mentioned in the table below.



[Signature]
PRINCIPAL

Genba Sopanrao Moze College of Engg
25/1/3, Balewadi, PUNE-411 045



"EMPOWERMENT THROUGH TECHNOLOGICAL EXCELLENCE"
GENBA SOPANRAO MOZE COLLEGE OF ENGINEERING

S. No. 25/1/3, Balewadi, Pune – 411045

(Approved by AICTE and Govt. of Maharashtra, Affiliated to Savitribai Phule Pune University)

DTE Code - EN6144 University Affiliation ID - PU/PN/ENGG/138/1999

Ph: 020-29513395

Website: www.gsmozecoe.org

Email: gsmoze@yahoo.co.in

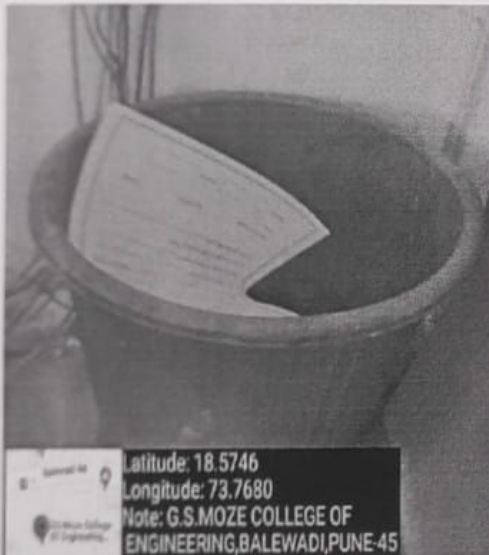
Founder President : Shri. Rambhau Moze

Date: 28/8/22

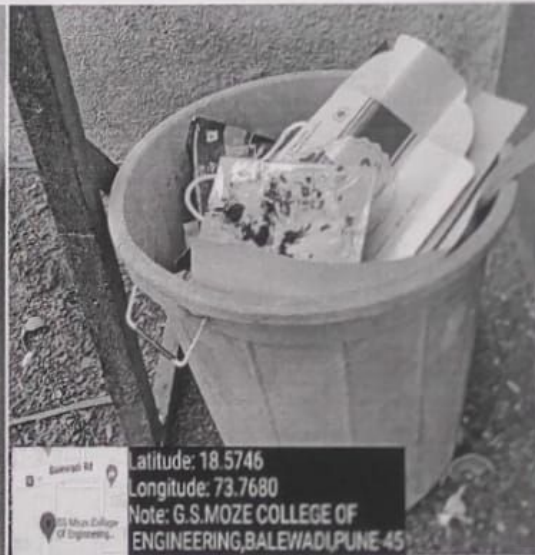
Table 1 : Bin Colour Coding.

Sr.No	Waste	Colour
1	Organic/Food	Blue
2	Recyclables	Green
3	Sanitary	Red
4	Other (plastic, glass, soiled papers and containers, etc.)	Yellow

Most of the glass based products are recyclable. So, no further segregation based on quality is done. The glass products are just collected and sent for recycling.



Latitude: 18.5746
Longitude: 73.7680
Note: G.S.MOZE COLLEGE OF
ENGINEERING,BALEWADI,PUNE-45



Latitude: 18.5746
Longitude: 73.7680
Note: G.S.MOZE COLLEGE OF
ENGINEERING,BALEWADI,PUNE-45



[Signature]
PRINCIPAL

Genba Sopanrao Moze College of Engg
25/1/3, Balewadi, PUNE-411 045



"EMPOWERMENT THROUGH TECHNOLOGICAL EXCELLENCE"
GENBA SOPANRAO MOZE COLLEGE OF ENGINEERING

S. No. 25/1/3, Balewadi, Pune - 411045

(Approved by AICTE and Govt. of Maharashtra, Affiliated to Savitribai Phule Pune University)

DTE Code - EN6144 University Affiliation ID - PU/PN/ENGG/138/1999

Ph: 020-29513395 Website: www.gsmozecoe.org Email: gsmoze@yahoo.co.in

Founder President : Shri. Rambhau Moze

Date: 28/8/22

In college campus dustbins are kept for the solid waste management .

Solid waste management is extremely important in your community mainly because it will prevent your household from experiencing the hazardous outcomes of solid waste material

Advantages Of Solid Waste Management

Solid waste management is an important topic to be understood by every individual. It is the responsibility of every one to manage the solid wastes arising in their homes, offices or other establishments properly. The importance of proper Solid Waste Management has several reasons.

Disadvantages Of Solid Waste

Our environment is polluted due to improper Solid Waste Management. When we dump wastes into our surroundings, it starts emitting harmful gases which are responsible for several health issues. It also reduces the fertility of soil and thus affects farming practices as well as health of farmers.



PRINCIPAL

Genba Sopanrao Moze College of Engg
25/1/3, Balewadi, PUNE-411 045



"EMPOWERMENT THROUGH TECHNOLOGICAL EXCELLENCE"
GENBA SOPANRAO MOZE COLLEGE OF ENGINEERING

S. No. 25/1/3, Balewadi, Pune - 411045

(Approved by AICTE and Govt. of Maharashtra, Affiliated to Savitribai Phule Pune University)

DTE Code - EN6144 University Affiliation ID - PU/PN/ENGG/138/1999

Ph. 020-28513385 Website: www.gsmozecoe.org Email: gsmoze@yahoo.co.in

Founder President : Shri. Rambhau Moze

Date: 28/8/22

NOTICE

All the students of Genba Sopanrao Moze College of Engineering are hereby informed that our college has organized the Mega Drive for E waste Collection . A mega drive is for free collection of domestic as well as commercial electronic waste was conducted in Pune on Sunday, 28 August . At the event which was conducted between 9 am to 1 pm, the donors of electronic as well as plastic waste will be rewarded with an e-certificate for their contribution to the campaign.
Interested students can give their entries to Prof. Alka Kumbhar.



Alka Kumbhar
PRINCIPAL

Genba Sopanrao Moze College of Engg
25/1/3, Balewadi, PUNE-411 045



"EMPOWERMENT THROUGH TECHNOLOGICAL EXCELLENCE"
GENBA SOPANRAO MOZE COLLEGE OF ENGINEERING

S. No. 25/1/3, Balewadi, Pune - 411045

(Approved by AICTE and Govt. of Maharashtra, Affiliated to Savitribai Phule Pune University)

DTE Code - EN6144 University Affiliation ID - PU/PN/ENGG/138/1999

Ph: 020-29513395 Website: www.gsmozecoe.org Email: gsmoze@yahoo.co.in

Founder President : Shri. Rambhau Moze

Date: 28/8/22

E-Waste Management

The mega drive for free collection of domestic as well as commercial electronic waste was conducted in Pune on Sunday, 28th August. The drive was organised at 300 centers across Pune city to collect the waste that people found during House cleaning by Pehel@2022 interested student from institute were sent for the drive.

At the event which was conducted between 9 am to 1 pm, the donors of electronic as well as plastic waste were rewarded with an e-certificate for their contribution to the campaign.

The moto behind this drive was creating awareness amongst the society regarding E-waste and Plastic recycling and proper disposal method making it a regular handling practice for scientific waste management. Some examples of e-waste are electronic devices like television sets, air conditioners, pen drives, microwaves, headphones, cameras, and mobile phones among other devices. All these are a part of the hazardous waste which creates problems hampering the environment as well as the health of every living being.

Students from different department participated in the organized Mega drive and actively collected the e-waste from different societies.



Atulya
PRINCIPAL

Genba Sopanrao Moze College of Engg

25/1/3, Balewadi, PUNE-411 045



"EMPOWERMENT THROUGH TECHNOLOGICAL EXCELLENCE"
GENBA SOPANRAO MOZE COLLEGE OF ENGINEERING

S. No. 25/1/3, Balewadi, Pune - 411045

(Approved by AICTE and Govt. of Maharashtra, Affiliated to Savitribai Phule Pune University)

DTE Code - EN6144 University Affiliation ID - PU/PN/ENGG/138/1999

Ph: 020-29513395 Website: www.gsmozecoe.org Email: gsmoze@yahoo.co.in

Founder President : Shri. Rambhau Moze

Date: 28/8/22



[Signature]
PRINCIPAL
Genba Sopanrao Moze College of Engg
25/1/3, Balewadi, PUNE-411 045



“EMPOWERMENT THROUGH TECHNOLOGICAL EXCELLENCE”
GENBA SOPANRAO MOZE COLLEGE OF ENGINEERING

S. No. 25/1/3, Balewadi, Pune – 411045

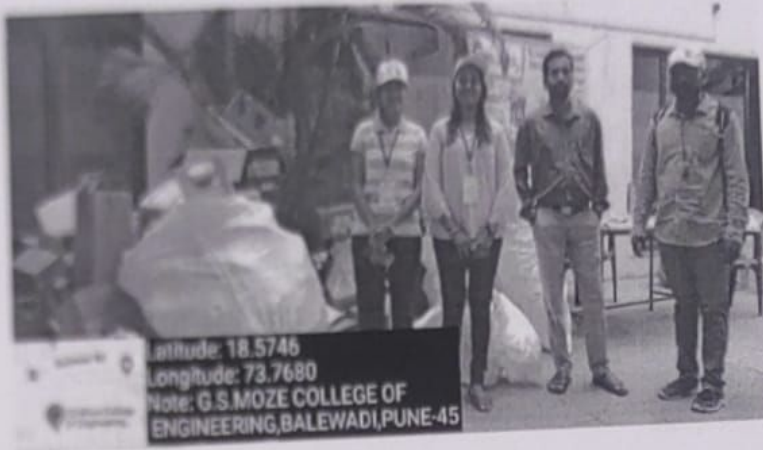
(Approved by AICTE and Govt. of Maharashtra, Affiliated to Savitribai Phule Pune University)

DTE Code - EN6144 University Affiliation ID - PU/PN/ENGG/138/1999

Ph: 020-29513395 Website: www.gsmozecoe.org Email: gsmoze@yahoo.co.in

Founder President : Shri. Rambhau Moze

Date: 28/8/22



Advantages

- Preserves natural resources
- Reduces greenhouse gas emission
- Reduces pollution
- Prevents wastage of non-renewable resources
- E-waste contains a lot of precious metals such as aluminium, copper, gold etc. Instead of throwing away the old electronic equipment in landfills or using new non-renewable resources it should be refurbished, re-used and recycled.

Disadvantages

- E-waste contains a lot of harmful chemicals such as lead in CRTs of computers and mercury in flat panel display screens. This can be absorbed by humans through contaminated drinking water.



PRINCIPAL

Genba Sopanrao Moze College of Engg
25/1/3, Balewadi, PUNE-411 045



"EMPOWERMENT THROUGH TECHNOLOGICAL EXCELLENCE"
GENBA SOPANRAO MOZE COLLEGE OF ENGINEERING

S. No. 25/1/3, Balewadi, Pune - 411045

(Approved by AICTE and Govt. of Maharashtra, Affiliated to Savitribai Phule Pune University)

DTE Code - EN6144 University Affiliation ID - PU/PN/ENGG/138/1999

Ph: 020-29513395

Website: www.gsmozecoe.org

Email: gsmoze@yahoo.co.in

Founder President : Shri. Rambhau Moze

Date: 28/8/22

- I. The processes of dismantling and disposing of electronic waste in developing countries led to a number of environmental impacts.
- II. Liquid and atmospheric releases end up in bodies of water, groundwater, soil, and air and therefore in land and sea animals – both domesticated and wild, in Environmental impact old keyboards and one mouse.
- III. When E-waste is warmed up, toxic chemicals are released into the air damaging the atmosphere.
- IV. The damage to the atmosphere is one of the biggest environmental impacts from E-waste.
- V. When electronic waste is thrown away in landfills their toxic materials seep into groundwater, affecting both land and sea animals. This can also affect the health of the people in the developing countries where most of the electronic waste in dumped.

Genba Sopanrao Moze College is truly crating awareness to their students of e-waste collection and management



[Signature]
PRINCIPAL

Genba Sopanrao Moze College of Engg
25/1/3, Balewadi, PUNE-411 045